

Appendix 1 HCAI targets 2024/25

017/25 DIPC Report Appendices 1-4

	2023/24 Target	2023/24 Actual	2024/25 Target
C. diff	32	97	98
E. coli	90	147	146
Klebsiella	22	38	36
Pseudomonas	18	21	19

Appendix 2 HCAI graphs

Table 1

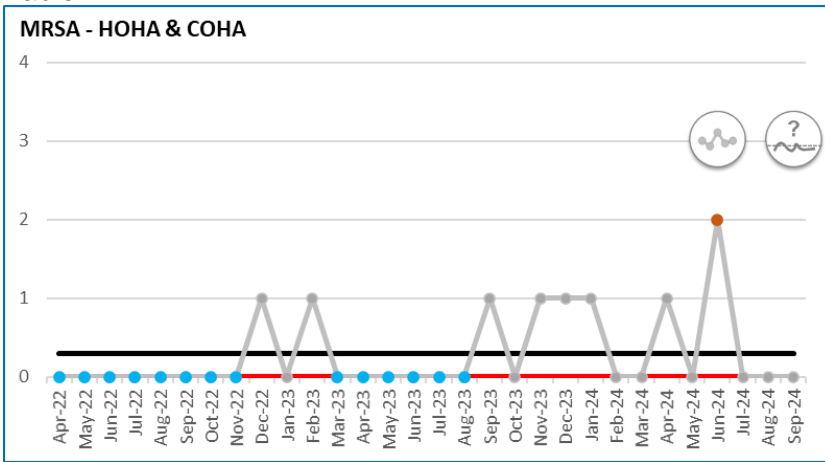


Table 2

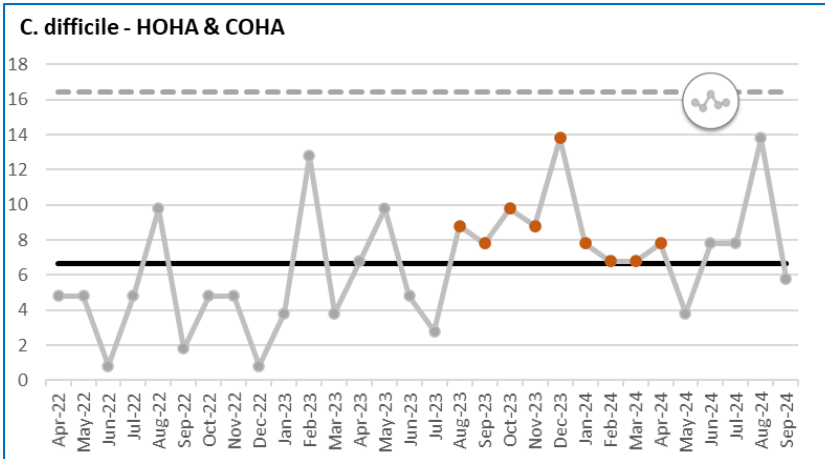


Table 3

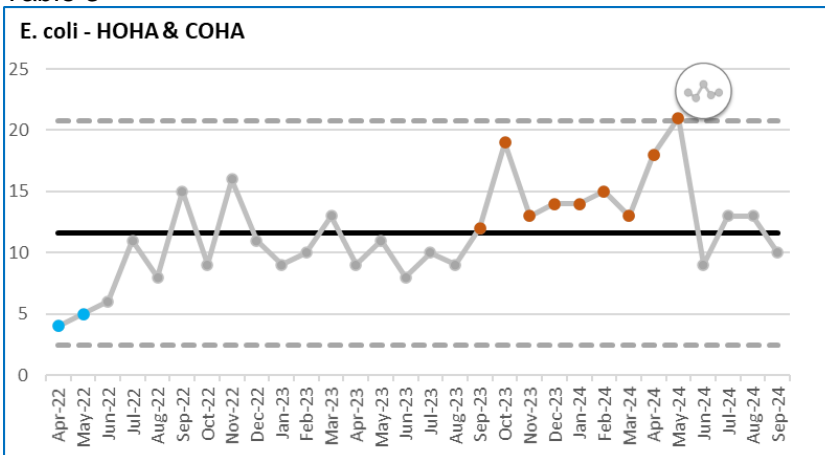


Table 4

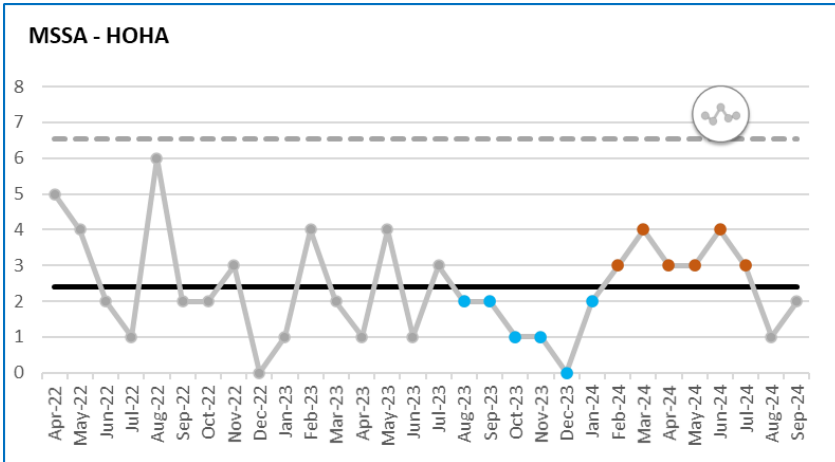


Table 5

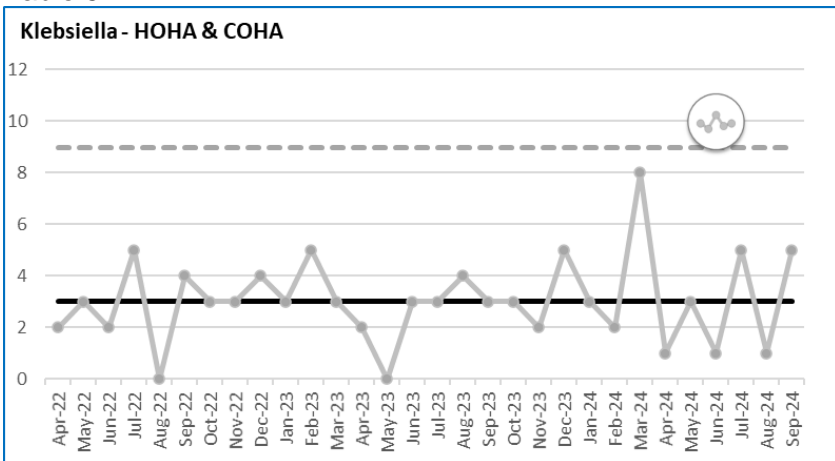
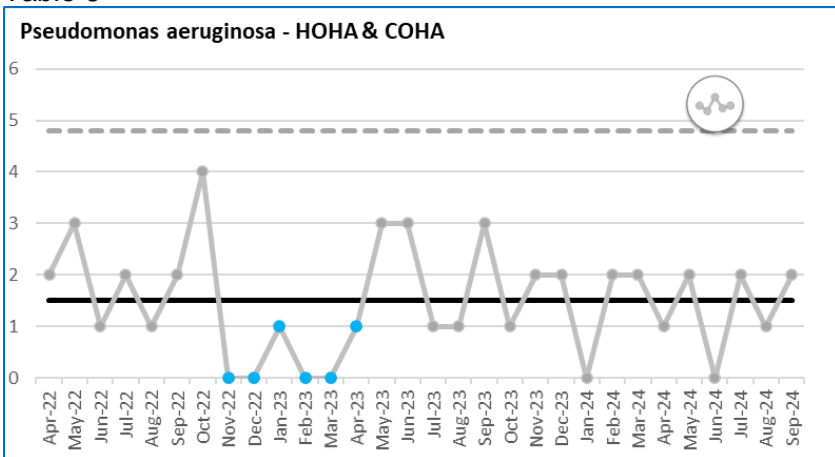


Table 6



Appendix 3 – Health and Social Care Act 2008 self-assessment tool (November 24)

Health and Social Care Act 2008: code of practice on the prevention and control of infections and related guidance				
Self-Assessment Tool				
Shrewsbury and Telford Hospitals NHS Trust				
Criterion	Statement of Compliance	Compliance Score	Score	Potential Score
Criterion 1	Systems to manage and monitor the prevention and control of infection. These systems use risk assessments and consider the susceptibility of service users and any risks that their environment and other users may pose to them.	95%	120	126
Criterion 2	Provide and maintain a clean and appropriate environment in managed premises that facilitates the prevention and control of infections.	93%	75	81
Criterion 3	Ensure appropriate antimicrobial use and stewardship to optimise service user outcomes and to reduce the risk of adverse events and antimicrobial resistance.	79%	19	24
Criterion 4	Provide suitable accurate information on infections to service users, their visitors and any person concerned with providing further health and social care support or nursing/ medical care in a timely fashion.	100%	66	66
Criterion 5	Ensure that people who have or at risk of developing an infection are identified promptly and receive the appropriate treatment and care to reduce the risk of transmission of infection to other people.	100%	6	6
Criterion 6	Systems to ensure that all care workers (including contractors and volunteers) are aware of and discharge their responsibilities in the process of preventing and controlling infection.	100%	18	18
Criterion 7	Provide or secure adequate isolation facilities.	92%	11	12
Criterion 8	Secure adequate access to laboratory support as appropriate.	100%	15	15
Criterion 9	The service provider should have and adhere to policies designed for the individual's care, and provider organisations that will help to prevent and control infections.	99%	405	408
Criterion 10	The registered provider will have a system or process in place to manage health and care worker health and wellbeing and organisational obligation to manage infection, prevention and control.	100%	48	48
Total Compliance		97%	783	804

Appendix 4

E.coli bacteraemia data West Midlands – Source UK-HSA quarterly bulletin.

E.coli bacteraemias are usually acquired from the patients endogenous flora so it is difficult to attribute infections as being genuinely HCAs. This also makes prevention and control more difficult as there are fewer IPC interventions that may be effective.

E.coli bacteraemias 4 quarters 2023-2025.								
Trust / beds	Type	Q2 23-24	Q3 23-24	Q4 23-24	Q1 24-25	Totals.		
SATH (700+)	HA All	31 107	46 132	42 102	48 109	167 450		
RWH (850)	HA All	33 74	37 87	24 67	26 74	102 302		
Dudley hosps (650+)	HA All	20 54	15 43	23 52	13 45	71 88		
Worcester acute, (800)	HA All	30 108	24 91	34 102	26 96	114 397		
Sandwell + west Mids	HA All	17 59	15 50	17 53	24 59	73 221		
Coventry+ Warwick (1005)	HA All	32 81	22 62	27 79	22 74	103 296		
UHNM (1320)	HA ALL	64 185	56 160	55 175	73 193	248 659		
University hospitals B'ham (2700)	HA All	103 282	111 279	96 239	132 267	442 1067		

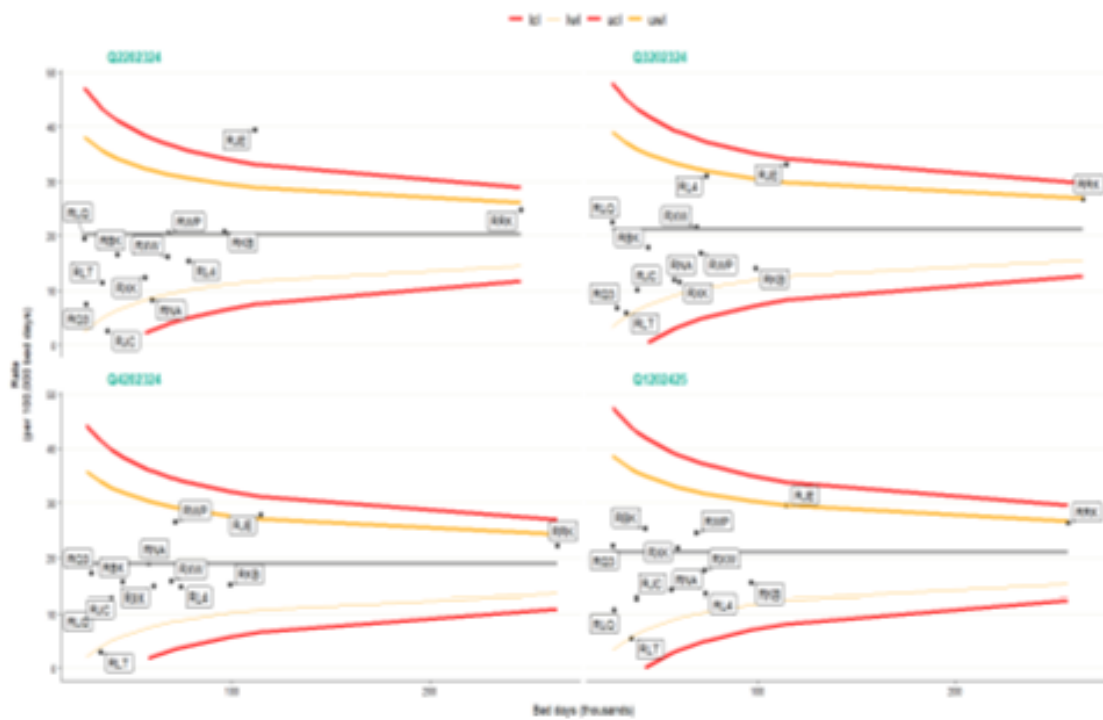
Some observations.

- The community acquired E.coli bacteraemias account for over half (55-70%) of the totals in each quarter.

Appendix 5

- Numbers of bacteraemias are related to the number of beds in the acute trust, but larger trusts also have greater numbers of community related infections.
- SATH appears to have consistently higher numbers of bacteraemias than some other comparable trusts in terms of bed numbers and patient mix.

See below for Funnel Plots No of bacteraemias /100,000 bed days.



NOTE – SATH is RXW. RWH is RL4