

Hospitals Transformation Programme

3 October 2024



HOSPITALS
TRANSFORMATION
PROGRAMME



HIGHER QUALITY,
SAFER CARE



IMPROVED
OUTCOMES



BETTER
ACCESS



A GREAT PLACE
TO WORK

Why are we here?



- Where are we in the process?
- Latest developments
- Your feedback
- How can you get involved?
- Questions

Dr Ed Rysdale, HTP Clinical Lead

Tom Jones, HTP Implementation Lead

Hannah Morris, Head of Public Participation

**HOSPITALS
TRANSFORMATION
PROGRAMME**



HIGHER QUALITY,
SAFER CARE



IMPROVED
OUTCOMES



BETTER
ACCESS



A GREAT PLACE
TO WORK

Where are we in the process?



Enabling works taking place at RSH site with contractors IHP

Spring 2024

Early works begin on new healthcare facilities at RSH

Summer 2024

Begin main build of new healthcare facilities

Autumn 2024



May 2024

Full Business Case approved nationally

Summer 2024

Begin work on patient pathway development with clinical teams

Spring 2025

Phase one of emergency department refurbishment to be completed

HOSPITALS TRANSFORMATION PROGRAMME



HIGHER QUALITY, SAFER CARE



IMPROVED OUTCOMES



BETTER ACCESS



A GREAT PLACE TO WORK

The clinical model: at both sites....



- ✓ 24 hour urgent care services
- ✓ Midwife led maternity services
- ✓ Outpatient Adult
- ✓ Day case chemotherapy
- ✓ Outpatient Child
- ✓ Frail and elderly care services
- ✓ Diagnostics
- ✓ Diagnostic Endoscopy



HOSPITALS
TRANSFORMATION
PROGRAMME



HIGHER QUALITY,
SAFER CARE



IMPROVED
OUTCOMES



BETTER
ACCESS



A GREAT PLACE
TO WORK

PRH will become the site specialising in 'Planned Care'



- ✓ Diagnostic endoscopy
- ✓ Vibrant planned care site, planned inpatient surgery with medical and surgical inpatients on a planned pathway of care
- ✓ Adult and child outpatients
- ✓ Day case surgery centre
- ✓ Midwife led unit
- ✓ 24/7 urgent treatment service, which would enable c.65% of patients who would have attended the traditional accident and emergency medicine department to be seen at PRH
- ✓ Dedicated procedure suite for local anaesthetics
- ✓ Enhanced rehab facilities and new therapy led wards
- ✓ Respiratory diagnostic and treatment centre
- ✓ Cancer treatment day unit

HOSPITALS
TRANSFORMATION
PROGRAMME



HIGHER QUALITY,
SAFER CARE



IMPROVED
OUTCOMES



BETTER
ACCESS



A GREAT PLACE
TO WORK

RSH will become the site specialising in Emergency Care



- ✓ Emergency Department
- ✓ Urgent Treatment Centre
- ✓ Critical Care Unit
- ✓ Consultant-led Maternity Care
- ✓ Children's Inpatient Services
- ✓ Emergency and Trauma Surgery with complex, planned and Children's Surgery
- ✓ Emergency Medicine, including Cardiology, Stroke, Respiratory and Acute Medicine
- ✓ Consultant Neonatal Services
- ✓ Head and Neck Inpatient Services
- ✓ Radiotherapy and inpatient and day Cancer Care and treatment

HOSPITALS
TRANSFORMATION
PROGRAMME



HIGHER QUALITY,
SAFER CARE



IMPROVED
OUTCOMES



BETTER
ACCESS



A GREAT PLACE
TO WORK

Latest developments

Improvements to Emergency Care



Indicative CGI images of the improved resuscitation area



Indicative CGI images of the improved acute assessment

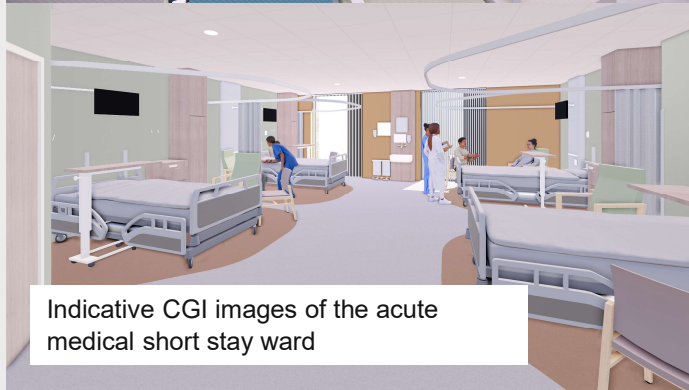
- We currently have two inadequately sized Emergency Departments, with the delivery of key clinical services split across two sites (including critical care), insufficient physical capacity (particularly for planned care services), mixing of planned and unplanned care pathways, and poor clinical adjacencies. Our buildings are aging and do not have the space or flexibility for modern healthcare.
- By locating all our clinical specialties on one site, with an expanded, more modern Emergency Department and new adjacent acute floor, we will improve the care we provide.
- Patients will receive more timely care and earlier review by the relevant specialists. This will reduce the amount of time patients spend in our hospitals and so improve flow through the system.



Improvements to Emergency Care



Indicative CGI images of the emergency department waiting room



Indicative CGI images of the acute medical short stay ward

Designed to meet future and current needs of the population, the expanded RSH Emergency Department will have:

- Larger and purpose-built Resuscitation bays
- Larger ED bays with improved ventilation and improved clinical adjacencies
- A larger ambulance waiting area with covered canopy to improve patient experience during transfer
- A separate children's emergency medicine footprint, offering modern and purpose-built examination rooms and separate waiting area



Faster access to the right care and clinicians



Buildings that support modern healthcare practices



An improved work environment for our colleagues



Construction

Next steps and site changes to RSH

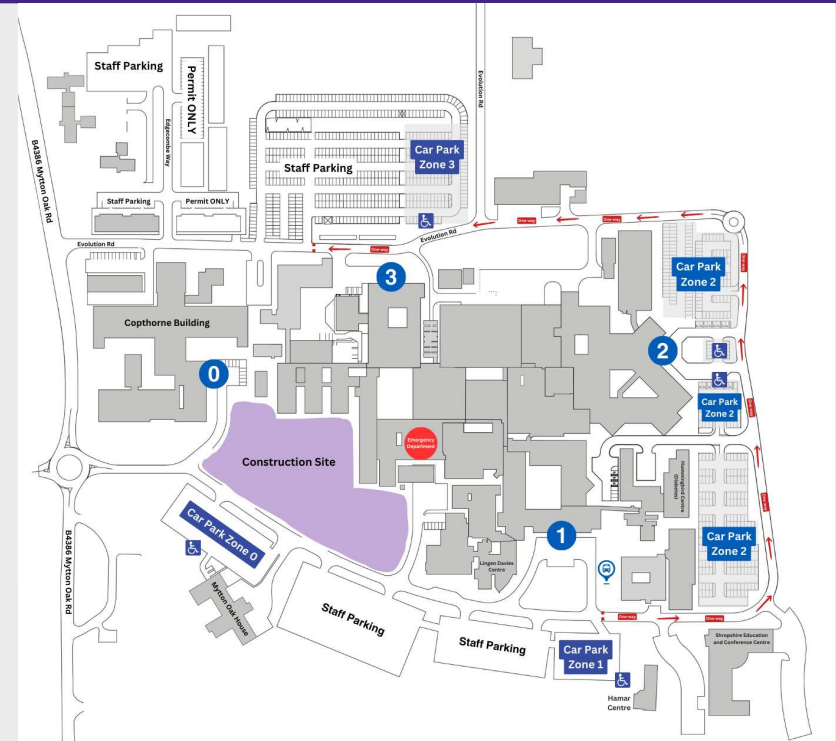
August/September – Solid hoarding around the perimeter of the construction site will start to be installed

August/ September – Ground works and soil strip begin on the construction site

September – Essential roadworks to reinforce Evolution Road (near accommodation blocks) to help manage the additional traffic

September – Opening of Racecourse Lane to allow for traffic to exit the site at peak times

October 2024 - Introduction of one-way system



Relocation of entrances

On Monday 29 July, we closed our main Outpatient entrance at RSH

What we've put in place...

- Volunteers at the Treatment Centre and Ward Block entrances to support patient and visitor wayfinding
- Surveying patients following their visits to understand what improvements can be made
- 15 new wheelchairs to accommodate increased need while ensuring timely repairs for existing wheelchairs
- Additional site safety measures, including lollipop people, pedestrian crossings
- We are working with subject matter experts to review our plans and gather feedback for improvements, such as human factors experts, visually impaired, and wheelchair users.
- Upgraded parking pay stations installed across site.

Next steps...

- We are installing additional internal signage, at eye level where possible, and using floor stickers at key junction points to support wayfinding
- Further safety measures will be installed around the road leading to Copthorne building including railings
- Updating our website to make it more user friendly and easier to find which entrance and parking is most appropriate
- Fold down seats will be added where possible allowing for a rest when walking longer distances.

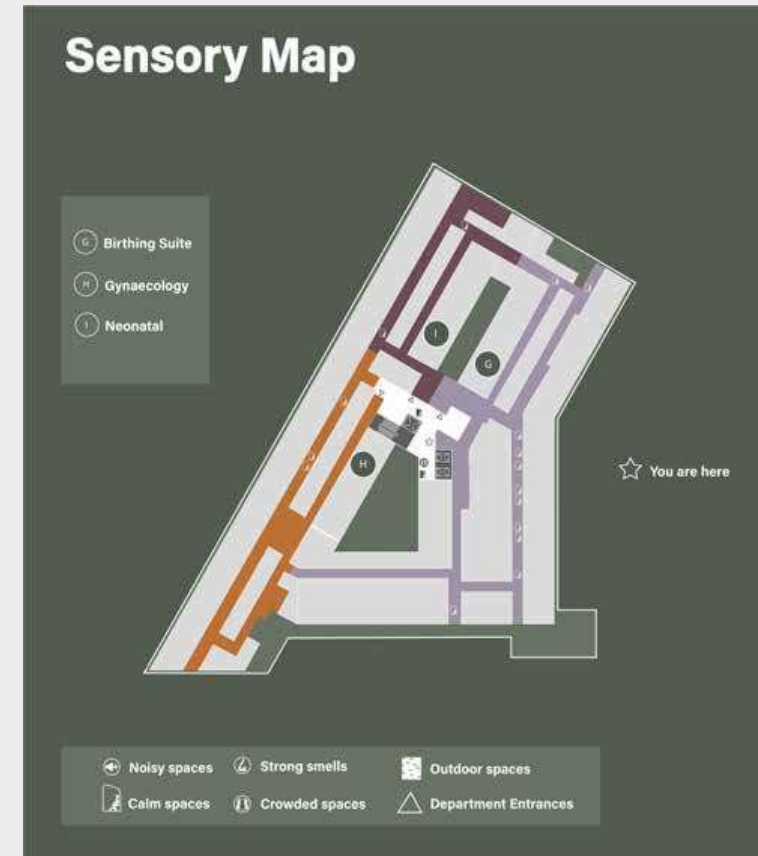


Designing for deaf and hard of hearing communities

All statutory requirements have been met in designing for hearing impaired communities.

Some additional steps have been taken:


- An acoustic engineer has reviewed spaces to ensure that reverberation times are suitable for clear voice cognition, etc.
- Induction loops are provided at all public reception points.
- Alarm systems will include visual alerts
- Art In Site have proposed a Sensory Map that would identify areas which are likely to be particularly noisy, or quiet, as well as other sensory information.




Recent engagement

Working closely with our communities


- We have been working closely with patients, colleagues, and the public to help inform our plans and designs. Some examples of this are...



We will now have a second Bereavement suite in the designs of the new Women and Children's facilities



Considering 'Calm Spaces' and a sensory room within the new build for visitors with neurodiverse needs




An informational booklet is now available to share with interested members of the public



Front entrance redesign into the new building with two separate entrances following public feedback



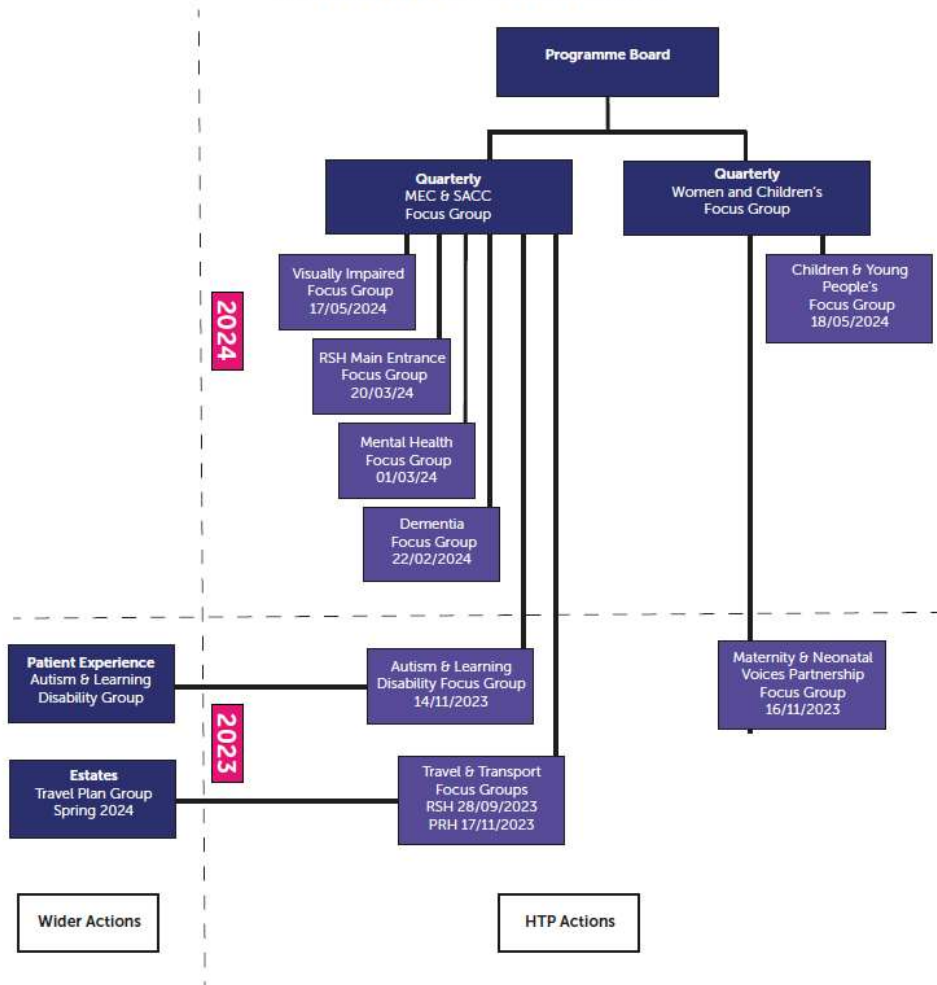
A Visual Impairment focus group has been held and focus groups are being planned for the Deaf and Hard of Hearing communities



Ongoing work on wayfinding including Sensory Maps, positioning of signage, naming conventions, and colour coding



Focus Group Actions 2023/2024



Process for focus group actions

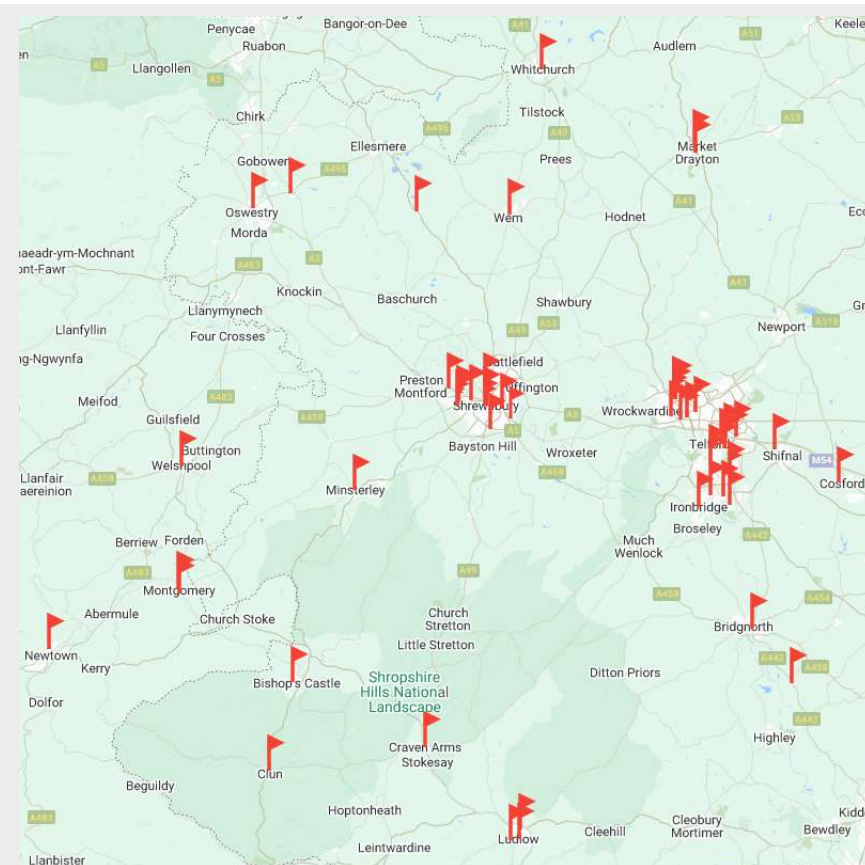
- Speciality focus groups are additional sessions on topics that warrant further exploration for the HTP project
- All the speciality focus group actions are fed back into the quarterly focus groups as detailed in opposite diagram

Engagement in 2024 so far

January – August 2024



- The map opposite shows the 70 events we have attended in 2024 between January and September 2024, in order to discuss HTP. These meetings are important to reach out to our seldom heard communities, who may not attend Trust meetings.
- In addition, we have attended 38 online events/meetings in this period. Often these meetings cover large geographical areas across Telford & Wrekin, Shropshire and mid Wales.
- We have a range of Trust organised HTP events including focus groups, About Health Events, and informal drop-in style sessions, alongside attendance at a range of external events/meetings supporting the Trust in engaging with our local communities.



HOSPITALS
TRANSFORMATION
PROGRAMME



HIGHER QUALITY,
SAFER CARE



IMPROVED
OUTCOMES



BETTER
ACCESS



A GREAT PLACE
TO WORK

How can you remain involved?



The Shrewsbury and
Telford Hospital
NHS Trust



Integrated
Care System
Shropshire, Telford and Wrekin

Additional engagement routes



Event & Date	Subject
Monthly Hospital Update – MS Teams	Monthly Trust News Update including update on HTP
Monthly newsletter email update - sent to our 4500+ community members	Update from Public Participation team including HTP update and details on how to get involved
Quarterly About Health online updates	One hour MS Teams online presentation for public from HTP team with Q&As
Quarterly Public Assurance Forum (next one October 2024) with representatives from organisations across health & social care in Shropshire, Telford & Wrekin & Mid-Wales	Presentation from HTP team with Q&As
SaTH Academies (Different academies offered to adults, young people, adults with learning disabilities and long-term unemployed in conjunction with employment agencies)	Presentation from HTP team with Q&As The People's Academy at SaTH
SaTH website and intranet	Webpages which support public engagement and Latest HTP meetings/feedback Public Participation - SaTH



BETTER, SAFER CARE



IMPROVED OUTCOMES



SHORTER WAITING TIMES



HOSPITAL TRANSFORMATION PROGRAMME

About Health & Quarterly Focus Groups



We are organising focus groups which will meet regularly over the next three years as plans develop. The focus groups are aligned to the clinical workstreams within the HTP programme. The meetings are hybrid, allowing attendance in person or over MS Teams. **All focus groups have the presentation, Q&As and action logs uploaded onto our website for complete transparency.**

We also hold quarterly online 'About Health – HTP' updates that provide an update on the programme from senior team members, and an opportunity to ask questions about the plans.

About Health - HTP

Next Event – Tuesday 29th
October, 18:30-19:30

Find out more or register to attend here:
<https://bit.ly/AboutHealth-HTP>

Quarterly Focus Groups

MEC&SACC – Tuesday 3rd December,
10:00-12:00

W&C – Thursday 5th December, 10:00-
12:00

Find out more or register to attend here:
<https://bit.ly/FocusGroups-HTP>



BETTER, SAFER
CARE



IMPROVED
OUTCOMES



SHORTER
WAITING TIMES



HOSPITAL TRANSFORMATION PROGRAMME

Upcoming Public Involvement



We are entering an exciting phase for the programme as we design the detailed patient pathways. We will continue to ramp up engagement and communications, working closely with our local communities, patients and colleagues to ensure we improve the experience for all the communities we serve.

If you would like us to attend an existing meeting or join you at an event, please email: sath.engagement@nhs.net

General engagement sessions

Much Wenlock Market (Corn Exchange),
Friday 11th October

Telford Town Centre, **Tuesday 26th**
November

Welshpool Livestock Market, **Monday 9th**
December

Special interest focus group sessions

Armed Forces focus group: **October 17th,**
10am-12pm

Patient Participation Group focus group:
October 24th, 10am-12pm

Patient Participation Group focus group:
October 24th, 6pm-8pm



BETTER, SAFER
CARE



IMPROVED
OUTCOMES



SHORTER
WAITING TIMES



HOSPITAL TRANSFORMATION PROGRAMME

Questions



The Shrewsbury and
Telford Hospital
NHS Trust



Integrated
Care System
Shropshire, Telford and Wrekin